



## Thermography Report

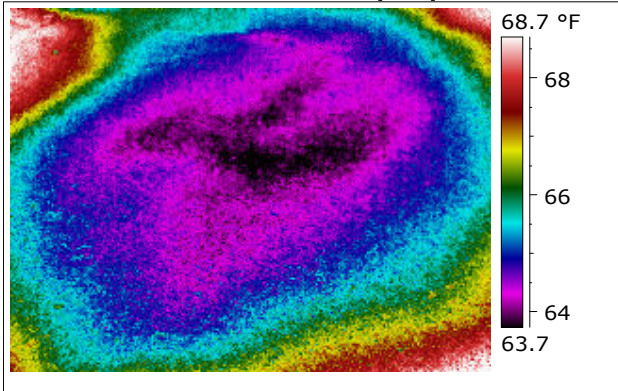
Town of Shrewsbury  
Parks and Cemetery Department  
Underground Water Pipe Leak at  
Mountain View Cemetery  
Route 140, Boylston Street  
Shrewsbury, MA 01545

Thermography Date: May 14, 2009  
Thermographer: Gerald T. Brady  
Outdoor Temperature: 58 F  
Weather: Cloudy



**Picture 1. Captured at: Mountain View Cemetery**

**Date & Time: 5/14/2009 8:42:20 AM**

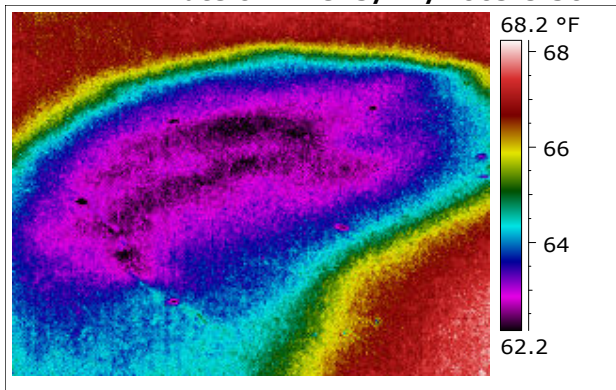


**Comment: Water line leak below surface of road. Road surface temperature is approximately 67 F. Coldest areas from water break are showing surface temperatures of approximately 62 F.**

**Recommendation: Excavate at coldest area on thermograph shown in black.**

**Picture 2. Captured at: Mountain View Cemetery**

**Date & Time: 5/14/2009 8:50:29 AM**

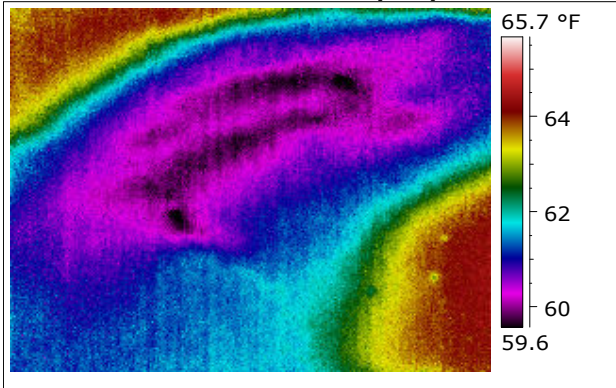


**Comment: Water line leak below surface of road. Road surface temperature is approximately 67 F. Coldest areas from water break are showing surface temperatures of approximately 62 F.**

**Recommendation: Excavate at coldest area on thermograph shown in black.**

**Picture 3. Captured at: Mountain View Cemetery**

**Date & Time: 5/14/2009 9:01:57 AM**



**Comment: Water line leak below surface of road. Road surface temperature is approximately 67 F. Coldest areas from water break are showing surface temperatures of approximately 62 F.**

**Recommendation: Excavate at coldest area on thermograph shown in black.**

**Picture 4. Captured at: Mountain View Cemetery**

**Date & Time: 5/14/2009 11:24:44 PM**



**Comment: Entire area affected by leak is marked in a circle. Boxed out area within circle area has a single spot indicating coldest temperature thus pinpointing exact leak area.**

**Recommendation: Excavate boxed out area only.**

**Picture 5. Captured at: Mountain View Cemetery**  
**Date & Time: 5/14/2009 11:24:44 PM**



**Comment: Boxed out area excavated. Two different views.**

**Picture 6. Captured at: Mountain View Cemetery**  
**Date & Time: 5/14/2009 11:24:44 PM**



**Comment: Boxed out area excavated. Two different views. Right side shows pipe. Depth of pipe 18", including 4 inches of asphalt.**

**Picture 7. Captured at: Mountain View Cemetery**  
**Date & Time: 5/14/2009 11:24:44 PM**



**Comment: Boxed out area exposed leak at single spot indicating coldest temperature thus pinpointing the exact leak area. Depth of pipe 18", including 4 inches of asphalt.**

**Repair was completed in last photo.**